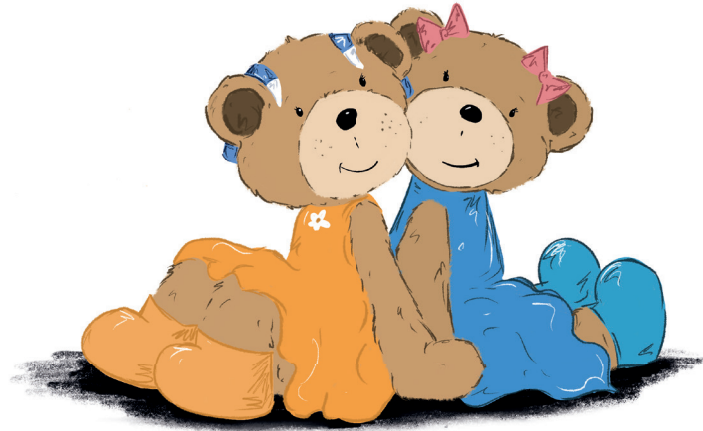




A BEAR BUDDIES LEARNING ADVENTURE

FRIENDS TOGETHER



written by Tanya Saunders
illustrated by Faith Broomfield-Payne

PARTICIPATION PAGES

FREE DOWNLOAD TO ACCOMPANY THE BOOK

www.avidlanguage.com/bearbuddies-friendstogether



Colourful Characters

First, let's talk about this Bear Buddy character.

Who is it? How do you know?

Do you like this Bear Buddy? Why?



Now colour
me in!





Personality Play

Let's think about Sala Bear.
What kind of bear is she?

Here are four questions about Sala Bear.

Listen carefully as your Reading Buddy reads them out,
then answer the questions.

Use your voice first! First say your answer out loud, then tick the correct written response below.

Try to answer in full sentences, but if you can't, that's OK!
Just answer 'yes' or 'no' - your Reading Buddy can then
model the full sentence for you. Ready? Listen!

- Is Sala Bear a little girl bear?

YES, Sala Bear is a little girl bear.

NO, Sala Bear is a little boy bear.

- Is Sala Bear kind and friendly?

YES, Sala Bear is kind and friendly.

NO, Sala Bear is not kind and friendly.

- Is Sala Bear mean and unkind?

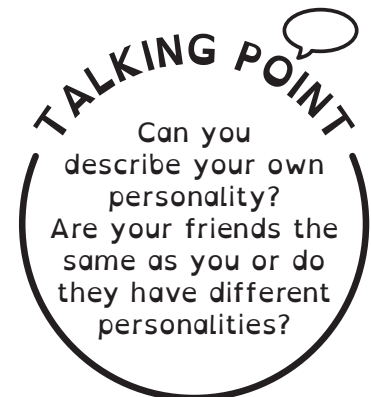
YES, Sala Bear is mean and unkind.

NO, Sala Bear is not mean and unkind.

- Does Sala Bear like to make new friends?

YES, Sala Bear likes to make new friends.

NO, Sala Bear does not like to make new friends.



What else can you remember about Sala Bear?

Ask your Reading Buddy what they remember about


Sala Bear: "What do you remember about Sala Bear?"

How do you feel?

Did you know that different words can sometimes share the same meaning? For example, "happy" and "glad". Listen carefully as your Reading Buddy reads the words listed below. These words all describe emotions or feelings.

 When something good happens, we feel happy.
Happiness is an emotion. What makes you feel happy?

 When something bad happens, we feel sad.
Sadness is an emotion. What makes you feel sad?

 When we don't like what is happening, we feel angry.
Anger is an emotion. What makes you feel angry?

Can you draw a line between the emotions listed on the left, and the Bear Buddy's facial expressions on the right? If you can't draw a line yet, that's OK! Just listen to the word and point to the face that connects with the feeling; then your Reading Buddy can help to draw the line with you.

happy

angry

sad

cross

upset

glad

unhappy

joyful

furious

crying



TALKING POINT

You can't always tell what someone is feeling just by looking at their face. Sometimes, what someone is feeling in their heart or thinking in their mind does not show on their face.

frowning



smiling



Who is this bear?
How do you know?

Making Friends

Imagine if you met Tiny Tony Bear in the playground!

What would you say to him? How would you introduce yourself?
Would you ask him to play with you?

Now, draw a picture of yourself meeting Tiny Tony Bear.

Next, tell your Reading Buddy what you would say to Tiny Tony Bear.

What do you think Tiny Tony Bear would say to you?

Work together with your Reading Buddy to draw some speech bubbles showing what you and Tiny Tony Bear might say to each other. Here are some ideas: "Hello, my name is..." "What is your name?" "Can I play with you?" What else?



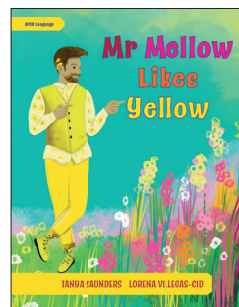
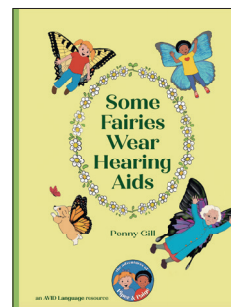
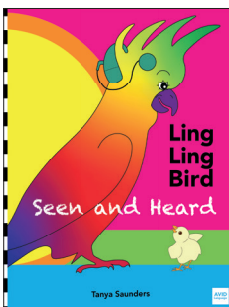
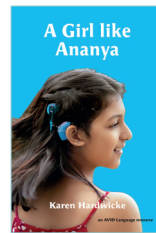
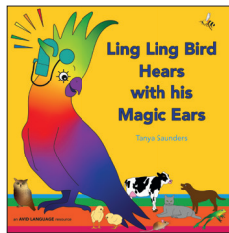
Bye bye! See you again soon!



AVID
Language

Inclusive books for children
with (and without) hearing loss

www.avidlanguage.com/books



& more!

FRIENDS TOGETHER

Published by Avid Language Ltd, 3 Cam Drive, Ely, CB6 2WH, UK
First published in 2021

ISBN

Paperback: 978-1-913968-06-9

Hardcover: 978-1-913968-07-6

eBook: 978-1-913968-08-3

Text © Tanya Saunders 2021

Illustrations © Faith Broomfield-Payne 2023

All rights reserved.



A BEAR BUDDIES LEARNING ADVENTURE